

LED Explosion Proof Linear Lights

ATEX/UL844/IECEX explosion proof



FEATURES

1. ATEX Zone1&Zone21&UL844 C1D2&IECEX listed, highest T6 ignition temperature level.
2. High heat transmit rate die cast housing ADC12 aluminum, patent design.
3. Shock and vibration resistant tempered glass, super clear 95% light transmit rate.
4. Anti-glare scientific optical reflector design, making the light more even, comfortable for eyes.
5. Original Seoul Semi LED source, high luminous efficacy and long lifespan.
6. MEANWELL HLG series driver, the highest level of MEANWELL driver.
7. Surface treatment-Powder coating, salt resistant and chemical resistant, also prevent dust from accumulating on the surface.
8. 2.0mm aluminum PCB with heat index 2.5, keep LED working under cool temperature.
9. Working temperature: -40° C to 50° C.
10. Ex mark: II 2G Ex db op is IIC T5...T6 Gb/II 2D Ex tb op is IIIC T94°C...T89°C...T84°C Db

APPLICATIONS

1. Suitable for warehouse, petroleum and chemical industries, coal mine, military, airport, warehouse, marine etc.
2. Other Zone1/Zone2 gaseous environment and Zone21/Zone22dust environment.



Chemical Factory



Offshore Oil Mining



Military Ship



Army Base



Gas Station



Petrol Process Factory



Traning Camp



Navy Port

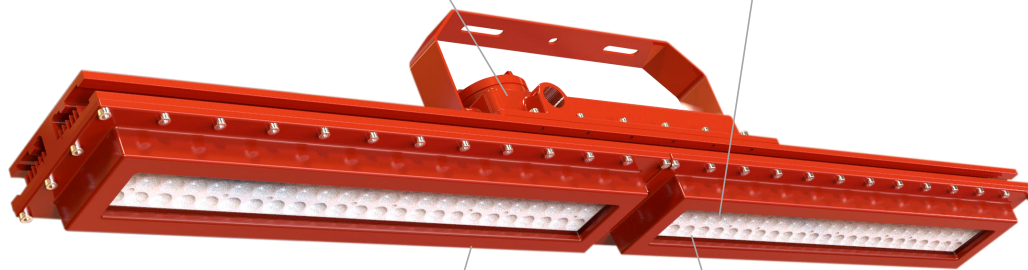
DETAILS



UL TUV CB EMC CE certified MW HLG series power driver, IP65 protective level, 7 years warranty.



The integration of reflective optical design, install directly in the light body, make the light more focus and comfortable for eyes.



High pressure die casting alloy aluminum housing, create through high pressure(1600 ton) in one piece, high explosion proof level and IP66 waterproof protection.



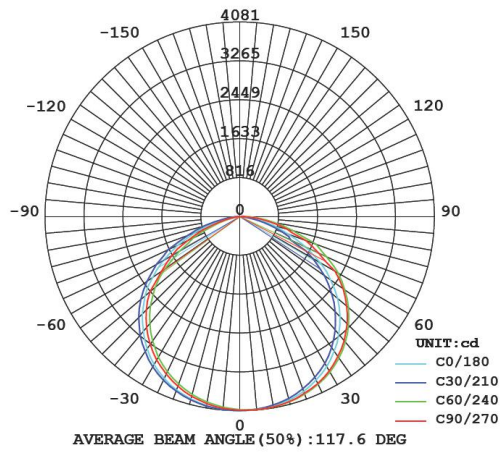
LED chips with 2.0mm thick Aluminum PCB board installed directly onto Aluminum Shell. As a result, the whole lamp is integrated as a heat radiator for the LED chips. Besides, the distance of LEDs are good enough for spreading heat, to ensure long lifespan, and with special circuit design, LED chips won't affect each other when any go down, so the lamp will keep working even if some LED chips stopped.

TECHNICAL SPECIFICATION

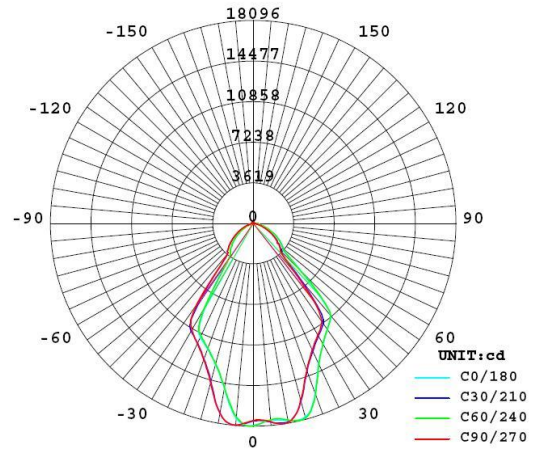
Model	Rated Power	Dimension (mm)	Beam Angle	IP Rating	Ex Mark
CES-EX-LN240	240W	1235*155*231mm	120°/60°/35°/15°	IP66	II 2G Ex db op is IIC T5...T6 Gb II 2D Ex tb op is IIIC T94°C...T89°C...T84°C Class I Divison 2 Groups A B C D
CES-EX-LN200	200W	1235*155*231mm	120°/60°/35°/15°	IP66	
CES-EX-LN185	185W	1235*155*231mm	120°/60°/35°/15°	IP66	
CES-EX-LN150	150W	1235*155*231mm	120°/60°/35°/15°	IP66	
CES-EX-LN120	120W	1235*155*231mm	120°/60°/35°/15°	IP66	
CES-EX-LN100	100W	559*155*231mm	120°/60°/35°/15°	IP66	
CES-EX-LN80	80W	559*155*231mm	120°/60°/35°/15°	IP66	
CES-EX-LN60	60W	559*155*231mm	120°/60°/35°/15°	IP66	
CES-EX-LN50	50W	559*155*231mm	120°/60°/35°/15°	IP66	
CES-EX-LN40	40W	596*126*180mm	120°/60°/35°/15°	IP66	

LED Specification						Driver Specification				
Item No.	LED	LM	Efficacy	CCT	CRI	Input	IP	PF	THD	Type
			Lm/W							
CES-EX-LN240	Seoul Semi	28800lm	120Lm/W	Cool White:5700-6500K	>70Ra	AC100-277V ~50/60Hz	IP65	>0.98	<10%	MEANWELL HLG driver with protective Aluminum Housing (Emergency/1-10V dimming/Sensor control available)
CES-EX-LN200	Seoul Semi	24000lm	120Lm/W							
CES-EX-LN185	Seoul Semi	22200lm	120Lm/W	Natural White:3700-						
CES-EX-LN150	Seoul Semi	18000lm	120Lm/W	5000K						
CES-EX-LN120	Seoul Semi	14400lm	120Lm/W	Warm White:2700-3500K						
CES-EX-LN100	Seoul Semi	12000lm	120Lm/W							
CES-EX-LN80	Seoul Semi	9600lm	120Lm/W							
CES-EX-LN60	Seoul Semi	7200lm	120Lm/W							
CES-EX-LN50	Seoul Semi	6000lm	120Lm/W							
CES-EX-LN40	Seoul Semi	4800lm	120Lm/W							

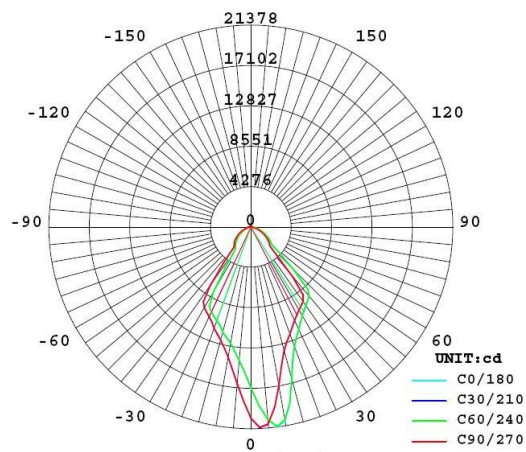
PHOTOMETRIC CURVE



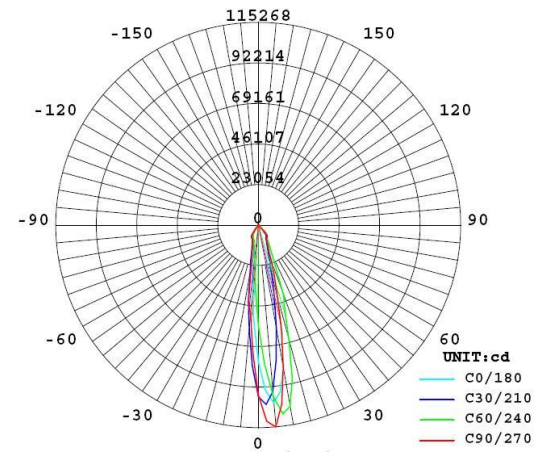
120° beam angle



60° beam angle

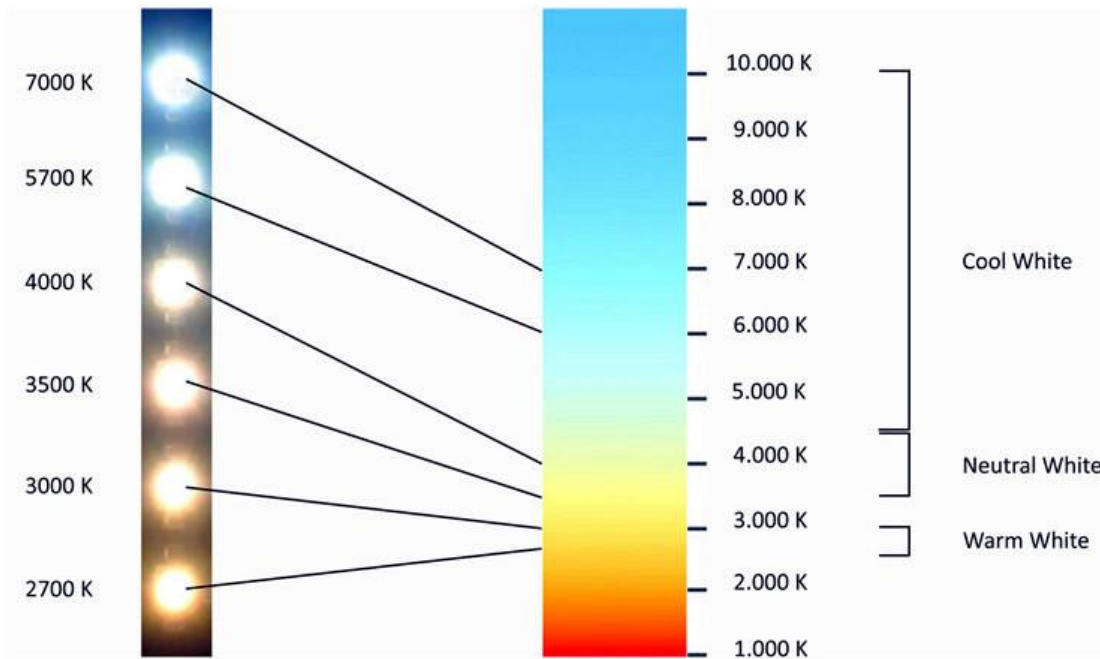


35° beam angle



15° beam angle

COLOR TEMPERATURE



PACKING INFORMATION

Item No.	Carton Size	QTY/CTN	N.W.	G.W.
CES-EX-LN-240	127x26x22CM	1	13.5kgs	14.5kgs
CES-EX-LN-200	127x26x22CM	1	13.5kgs	14.5kgs
CES-EX-LN-185	127x26x22CM	1	13.5kgs	12.5kgs
CES-EX-LN-150	127x26x22CM	1	13.5kgs	14.5kgs
CES-EX-LN-120	127x26x22CM	1	13.5kgs	14.5kgs
CES-EX-LN-100	63x26x22CM	1	6.5kgs	7.5kgs
CES-EX-LN-80	63x26x22CM	1	6.5kgs	7.5kgs
CES-EX-LN-60	63x26x22CM	1	6.5kgs	7.5kgs
CES-EX-LN-50	63x26x22CM	1	6.5kgs	7.5kgs

INSTALLATION METHODS

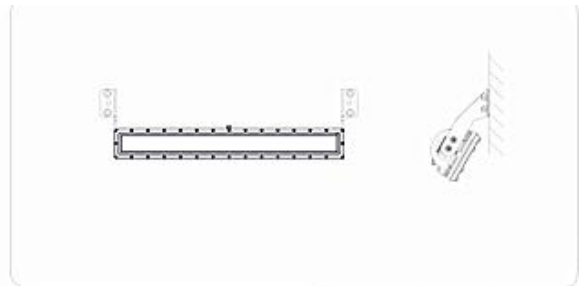
1. U-shaped bracket:



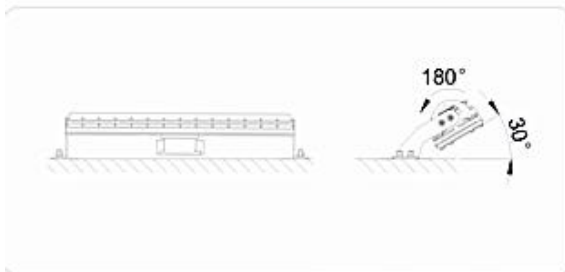
2. Wall mount bracket:



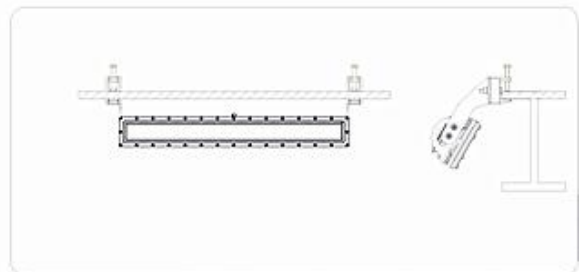
Pipe clamp



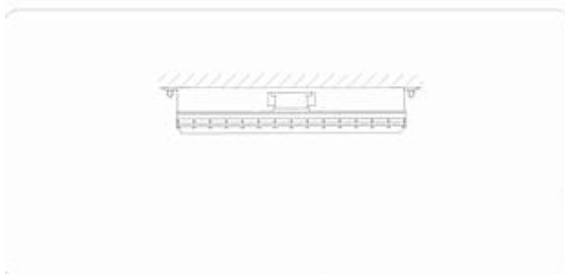
Wall mount



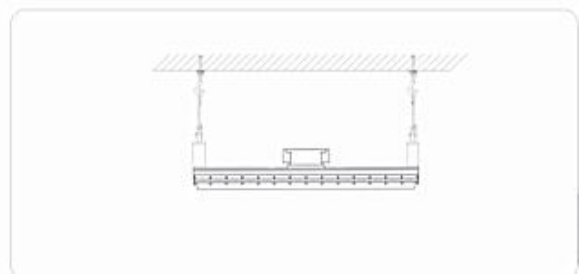
Stanchion mount



Clamp mount



Ceiling Mount

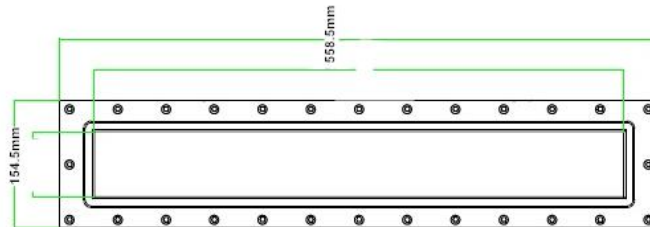
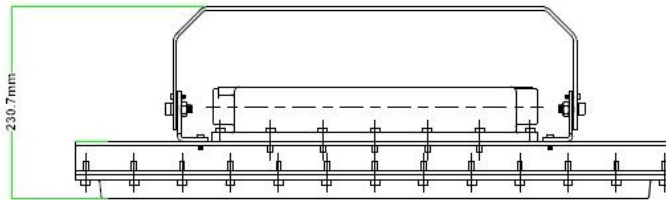
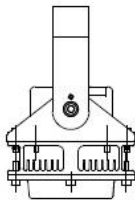
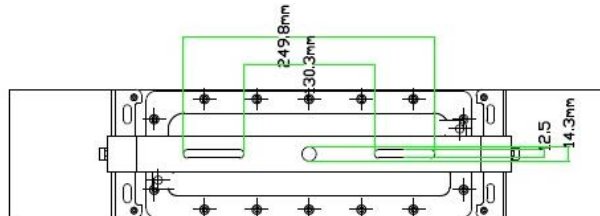


Pendant Mount

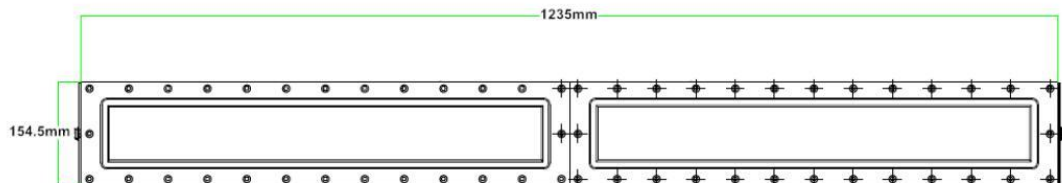
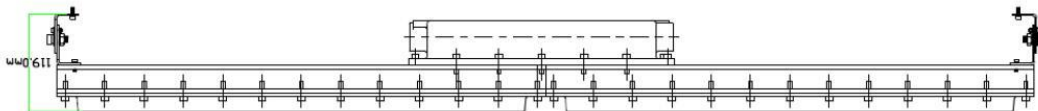
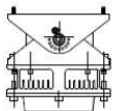
Drawings

50W-100W(L617mm*W155mm*H148mm)

Unit:mm



120W-240W(L1235mm*W155mm*H148mm)



CAUTION

1. Read the Manual carefully before installing.
2. To avoid risk of explosion and electric shock, the product must be installed, inspected and maintained by a professional electrician.
3. Be sure the electricity is off before installing or maintaining the light.
4. The input voltage must not exceed the limit of the range AC100-277V.
5. Working temperature must not exceed the limit of the range -40° C to 50° C.

If you have any question, please contact:

CESPEX Lighting Co.,Ltd

Office: Room1501, No.28-29 Lianyou building, Fulian 2nd area, Sanlian community, Longhua road, Longhua district, Shenzhen, Guangdong, China. (518109)

Headquarter: Room6001-6009, 6th Floor Wangcheng Building, Longguan East Road, Longhua District, Shenzhen city 518109, China. (518109)

Factory: No.273, Tangxia Road, Fenghuang Hillock, Tangxia Town, Dongguan City, Guangdong Province, China.

E: sales@cesp-industrial.com

T: 0086-13267157712

Skype: CESP-5

Web: www.cesp-industrial.com